



MIS | ERP Software Offset Packaging



GET TO KNOW SISTRADE

SISTRADE – Software Consulting, S.A. is an information systems company with know-how in software development and consulting service for different areas, including industrial companies. SISTRADE main goal is to offer the market the best information systems tools, in order to help its customers to improve their performance in all the critical business processes.

Sistrade® MIS | ERP is a configurable solution and the modules can be adapted to specific needs of each company, avoiding the implementation of a package which is too generic and will not be used at 100% of its capacity.

Technology

All Sistrade® solutions use Microsoft SQL Server support database. It is a relational database which optimises IT environments, providing a safe and reliable platform for data analysis and management. SQL Server delivers fundamental technological advances in terms of information repository for collaborative users and adds value to the organizations.

Sistrade® modules also incorporate an engine based reporting (SSRS - SQL Server Reporting Services) in multidimensional perspectives and adjusted to the profile of each user.

Markets

Printing & Packaging Industry
Labels & Flexible Packaging Industry
Security Printing Industry
Metalworking Industry
Plastic Extrusion Industry
Publishing Industry
Wire and Cable Industry
Baler Twine Industry
Netwrap Industry
Beverage Industry
Service sector
Commercial sector



SISTRADE is also certified in the standards NP 4457:2007 and ISO 9001:2008



WWW.SISTRADE.COM

Key Points



+ 3000 Users



+ 20 Countries



4 Continents



Industry 4.0



Optimized for Offset Packaging



SQL Server



Cloud Based



Easy Interface



Multi-device



Flexible and adaptable



+ 15 Languages



Business Intelligence

MIS | ERP Software for Offset Packaging

Internal Workflow



Elaborate an estimate	Full detailed estimating
Send to the customer for approval	Email directly from the ERP
Order approval	Analysis of customer's current account
Order confirmation	Job order creation
Graphical Process Management	Control of the graphical process
Stocks and Procurement	Suppliers - Warehouse - MRP
Job Order approval for production	Connection with production area
Production Management	MES - Scheduling
Quality Control	From materials to machines
Shipment of the products	Packing - Shipping
Invoicing the customer	Connection with accounting



MIS|ERP Software for Offset Packaging

Software for the Printing Industry of Packaging



Sistrade[®] MIS|ERP offers a wide range of solutions for products in the industries of folding cartons, corrugated packaging and displays. It allows a simple and fast estimating, providing all the necessary information.

Sistrade[®] is a completely configurable solution, very flexible and can be adapted to the reality of any company. Among various specific features, it provides access to the control of the entire production process and covers all the manufacturing stages of all running jobs.

Main Features

- Estimate jobs such as folding cartons, corrugated packaging and displays
- Design library including ECMA and FEFCO standards as well as customer-developed designs
- CAD/DXF interface to allow the use of external software suites for the imposition definition
- Fast and easy imposition layout optimization for the design library, including nesting and gang printing
- Calculation of inks and varnishes consumption
- Tool library management for dies (cutting, stripping, embossing, ...)
- Material traceability from its reception until final product and backwards
- Packing and palletization definition and calculation
- Pre-press and customer approval workflow
- Multi-section and multi-plant job scheduling, including alternative scenarios
- Production follow-up in real-time through shop-floor data collection or using automation data
- Industrial cost calculation that allows pre and post production cost analysis
- OEE – Overall Equipment Effectiveness
- Finished goods management by batch/pallet and labelling (including GS1 identification, box label, pallet label, ...)
- Quick dispatch and invoicing of finished goods

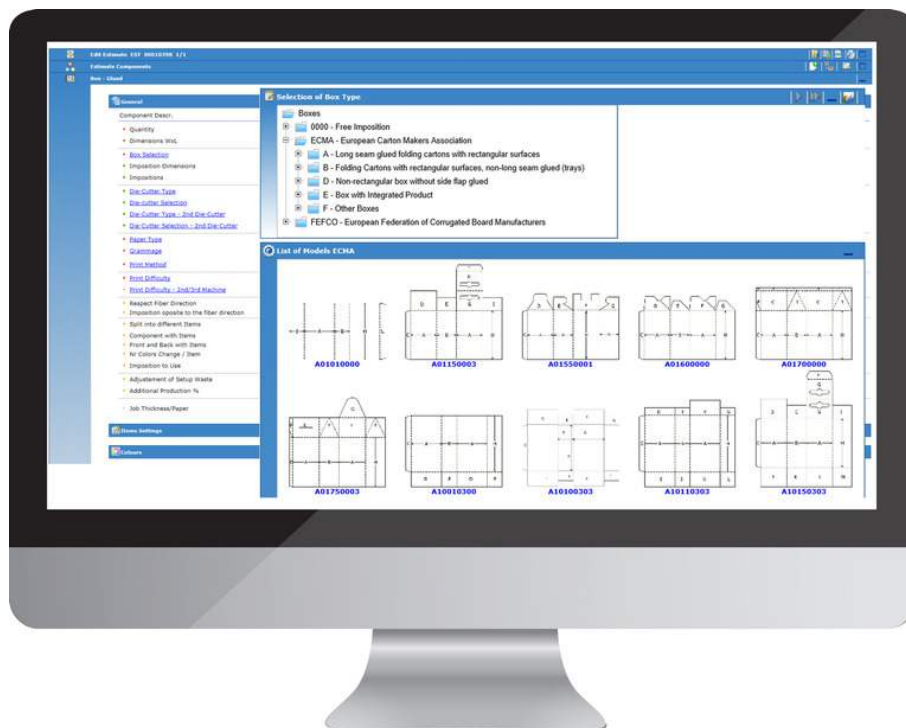
MIS|ERP Software for Offset Packaging

Estimates - Management

Sistrade® creates a quotation mentioning the details of the production, including all the relevant costs and features of the final product and does it according to the commercial sequence:



Sistrade® allows users to elaborate a fast and detailed quotation, simulate other quantities, send directly to the client and wait for the approval.



Main Features

Design library allows users to have access to a complete set of predefined designs for a fast imposition calculation

- All FEFCO and ECMA designs are already displayed in the system to facilitate the design of the box. It is also possible to include new ones

MIS|ERP Software for Offset Packaging

Estimates - Key Features

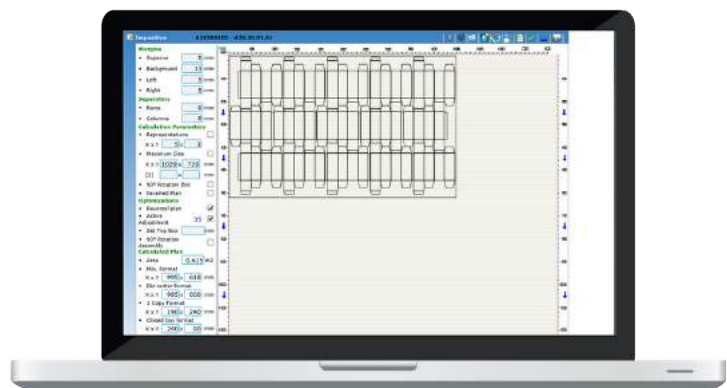


CAD/DXF integration from external software suites

- Allows a dynamic integration with structural design CAD systems
- System collects all the necessary information from file: imposition layout, number of UPS, sheet dimensions, die blades dimensions for both cut and crease
- It is possible to adapt number of UPS to the job's needs (i.e. imposition was made with 9 UPS but only 6 UPS will be needed) and the system adapts all calculations to that change
- Maintenance of all used and unused files with preview option

Imposition calculation and optimization, including grain direction definition

- Definition of the printing machines with all its technical features
- Change the parameters of the machine, suggested by the system
- Change the paper that the system suggests
- Calculation of the plan and complete optimization of the printing plan, including design rotation (90°, 180° and 270°) and nesting.



MIS|ERP Software for Offset Packaging

Estimates - Management



Format	Area	Exp.	Min. Cost	
890x660		0.383	4x2	770x498
890x660	90° Rotation Assembly	0.429	2x3	580x730
890x660	Active Adjustment	0.405	4x2	865x468
890x660	Active Adjustment + 90° Rotation Assembly	0.434	2x4	493x880
890x660	Reversal plan	0.36	4x2	770x466
890x660	Reversal plan + 90° Rotation Assembly	0.517	3x4	580x806
890x660	Reversal plan + Active Adjustment	0.497	4x3	805x618
890x660	Reversal plan + Active Adjustment + 90° Rotation Assembly	0.492	3x3	623x700
890x660	Inverted Plan	0.383	4x2	770x466
890x660	Inverted Plan + 90° Rotation Assembly	0.429	3x3	580x730
890x660	Inverted Plan + Active Adjustment	0.405	4x2	865x466
890x660	Inverted Plan + Active Adjustment + 90° Rotation Assembly	0.434	2x4	493x880
890x660	Inverted Plan + Reversal plan	0.36	4x2	770x466
890x660	Inverted Plan + Reversal plan + 90° Rotation Assembly	0.517	3x4	580x880
890x660	Inverted Plan + Reversal plan + Active Adjustment	0.497	4x3	805x618
890x660	Inverted Plan + Reversal plan + Active Adjustment + 90° Rotation Assembly	0.492	3x4	623x700

Format: 890 x 660 Area: 0.38 Representations: 4 x 2 Min. Format: 770 x 466 Die-cutter format: 780 x 450 Copy format: 190 x 240

Reversal plan

Reversal plan + 90° Rotation Assembly

Reversal plan + Active Adjustment

Reversal plan + Active Adjustment + 90° Rotation Assembly

Multiple scenario comparison

- Compare different optimizations and paper sizes to choose the best combination that fits your needs.

Tool management

- Manage die-cutters according to the desired final product.

Inks and varnish consumption

- Estimate the costs of ink and varnish combination in the production of your products.



MIS|ERP Software for Offset Packaging

Estimates - Key Features



Packing, palletization and truck/container definition

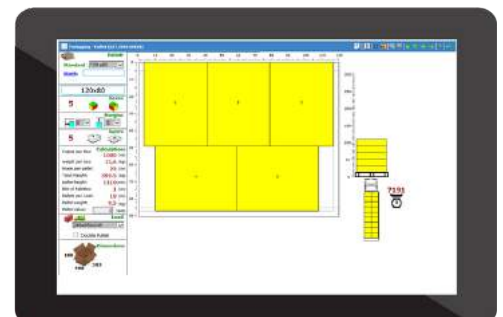
Box definition

- Possibility of defining all the information of the product that is being packed
- Type of carton/corrugated cardboard box
- Box dimensions (can be automatically calculated according to the product's specifications)
- Quantity of products per box (can also be calculated)
- Possible forms of assembling the product inside the box



Pallet definition

- Definition of the type and dimensions of the pallet
- Distribution of the boxes in the pallet
- Definition of the number of layers by pallet
- Definition of the number necessary pallets
- Definition of the truck/container and the number of pallets per cargo

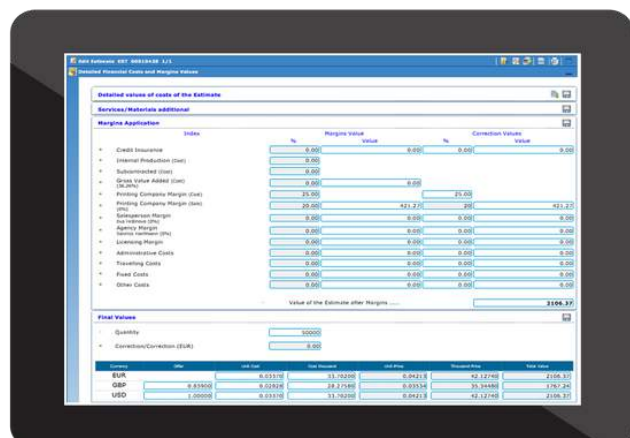
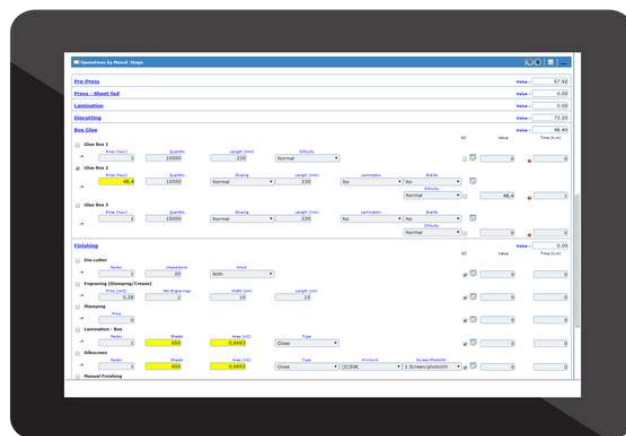


MIS|ERP Software for Offset Packaging

Estimates - Management

Fully automated operations cost and duration calculation

- Determine the costs per operation automatically and know which processes need to be optimized.

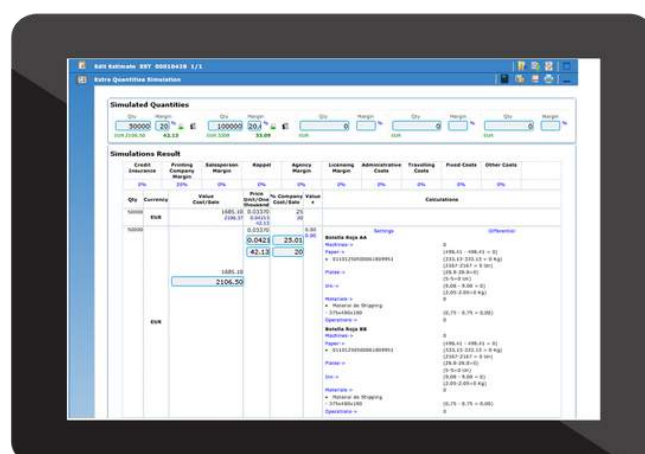


Final values and margins insertion

- Application of final margins, with margin index, commissions, administrative costs, fixed costs, rappel, etc;
- Predefined margins can be set

Other quantities simulation

- This tool allows the user to simulate the production of extra quantities and to know automatically its possible costs and to see if its production is profitable



MIS|ERP Software for Offset Packaging

Displays

- It is possible to use the features of the system to define all necessary information for the manufacturing of POS/POP displays
- It is possible to have a job that is made out of several parts or components that can be printed either together on the same sheet or on multiple sheets
- Whether using an already existing design or a completely new design, through the existing features of the system, every process is taken into consideration
- Each part or component has its own manufacturing process and all details are defined and can be totally different from each other
- The necessary materials for every step in manufacturing are calculated. It can range from a simple cardboard display to a high level of complexity with the mix of several materials like cardboard, corrugated board and foamboard

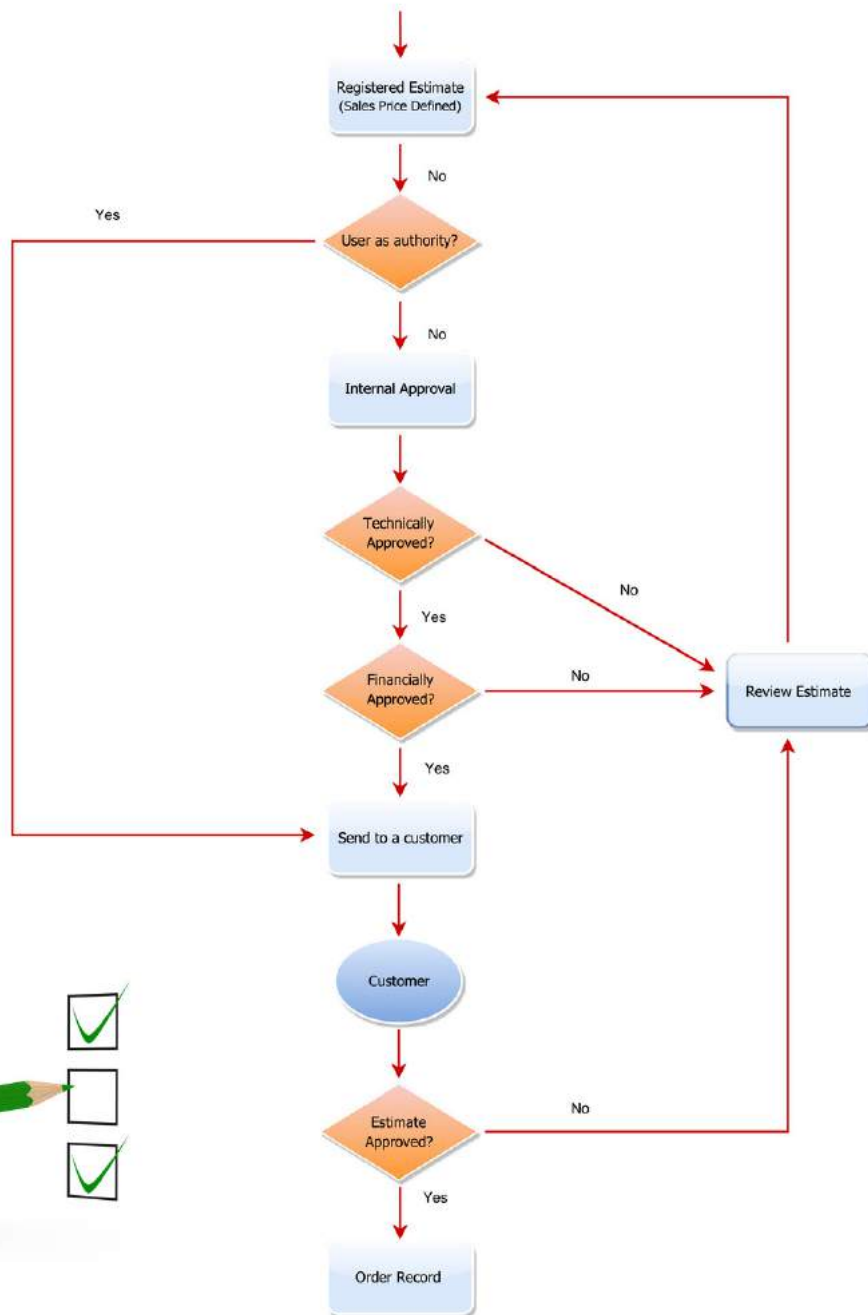


Estimates - Cost Calculation

- Type of carton to be printed and grain direction. System calculates make-ready and running waste and needed sheets
- Corrugated cardboard manufacturing data: type of liner paper, flute paper, flute type and associated carton needs and costs
- Inks and varnishes definition: consumption and cost calculation
- Plates calculation
- Print make-ready time and cost
- Print time and cost
- Pre-press operations
- Post-press operations (lamination, hot/cold stamping)
- Folding and glueing operation
- Subcontracted/outsourced operations
- Raw materials definition and calculation
- Auxiliary tools (die-cut blade, braille, ...) definition and calculation

MIS|ERP Software for Offset Packaging

Estimates - Analysis and Approval



Follow up

- Estimate sent directly to customer's e-mail
- Customer feedback and competition information
- Review estimate, comments and justification

Other functions

- Manage and add attachments to the estimate
- New estimate version (for repetition jobs)
- Easily accessible "Last Estimates" and advanced search

MIS|ERP Software for Offset Packaging

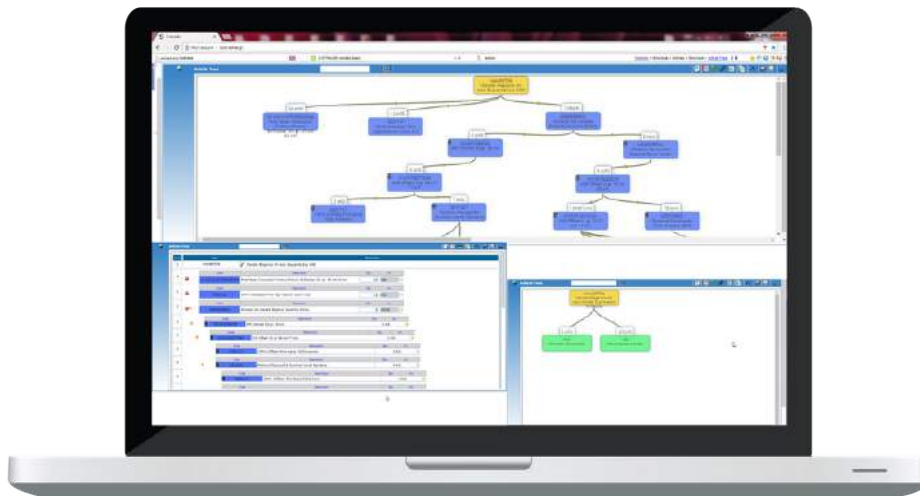
Stocks & Purchases

- Full management of stocks and suppliers
- Supplier and Product Management
- Inventory
- Mobile Management Software
(entries/exits/material transfers)
 - Mobile Warehouse Management Solution



MRP - Manufacturing Resource Planning

MRP enables companies to achieve compliance with the maximum number of customer orders keeping its promises to customers,



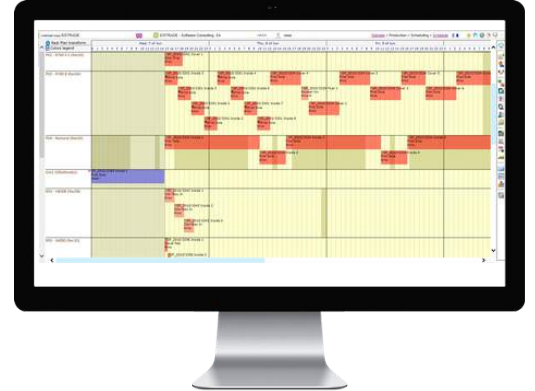
- Selecting orders and their materials through advanced search
- Calculation of purchase needs, production and reserves according to stocks
- Automatic update of required materials for production
- Automatic suggestion of material reserves
- Calculation of dates according to lead times of purchase and manufacture
- Recalculation of dates and notifications to the user of the possible non-compliance of delivery deadlines to the customer of the final product

MIS|ERP Software for Offset Packaging

Production Management

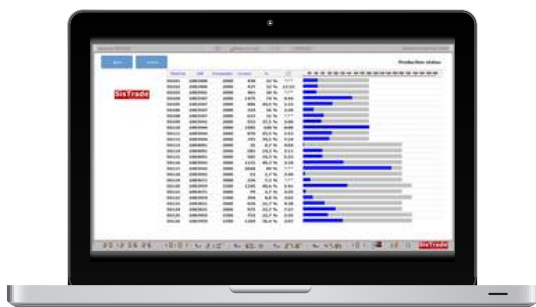
Scheduling

- Gantt scheduling of job orders
- Sequencing of operations by drag & drop or in tabular format
- Assisted employee scheduling
- Matrix-based scheduling of operations by employee
- Multi-user scheduling
- Multiple Drag & Drop in Gantt Chart
- Cost Scenarios
- Multi plant
- Scenarios simulation
- Multi Plant



Manufacturing Execution System

- Monitoring the operation of preparation and production
- Event log and the operations they registered
- The interpretation of the information provided by the industrial automation
- Picking of materials and finished products to monitorize where they are at the warehouse and their number
- Automatic addition of data using PLC's
- Industrial Supervision in a graphical way
- Issuing and controlling Job Orders;
- Industrial Costing;
- Comparison between forecasted and accomplished
- Traceability of the production process
- Local or remote supervision and multi-factory
- Real-time information about the functional status of the machine
- Identification of employees who are working on the machine
- Produced and rejected quantities
- Events and occurrences per machine and per job order
- Display of speed per machine in real-time
- Register of automatic downtimes and their reasons.



MIS|ERP Software for Offset Packaging

Standard Reports and Report Generator

Sistrade® solution provides various standard reports for all of the areas of the ERP, allowing a quick access to key information on the company.

Sales

- Sales ranking, analysis and evolution
- Commissions report
- Return on sales
- Documents tracking
- Orders evolution
- Delivery time control
- Sales by basic material/product

Procurement

- Control of purchases orders/receptions
- Supplier prices catalogue
- Control of supplier invoices
- Inventory
- Subcontracts costs expected/real
- Annual purchase invoicing
- Monthly/accumulated purchases
- ABC supplier analysis

Production

- Operator and machine productivity
- Expected production time vs real time
- Real-time beginning and end of production
- Real-time information about machine status
- Machine history
- Produced and rejected quantity
- Evaluation of KPIs

Accounting

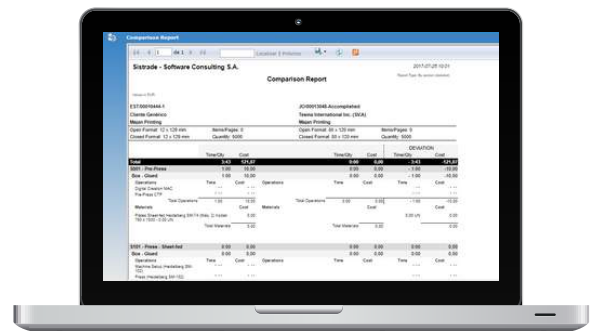
- Statements
- Accumulated
- Trial Balances – General Ledger
- Fiscal reports
- Income statement

Treasury

- Current accounts
- Statement of settlements
- Due date and collection notices
- Vendors/agents
- Banks and cash

Report Generator

- Sistrade® allows the user to generate specific reports from any module according to its needs



Forecasted VS Accomplished

MIS|ERP Software for Offset Packaging

SmartStatistics

All modules have the most relevant indicators to be presented for each area, such as the total of invoicing in sales, the occupation of the stocks in the warehouses, approved production orders in production, the total of debit and credit in accounting, the number of active employees in human resources and many others.

With this important tool users can analyze important information of the company filtered by:

- Week/month/quarter/semester/year/financial year and other periods
- Client/vendor/country

Estimates:

- Estimates requested, assigned, approved and granted
- Estimates response time
- Productions (new vs repeat) and by type

Orders:

- Orders volume and approved for production
- Pending credit approval
- Return on sales
- Order book
- Orders by country

Invoicing:

- Sales volume
- Confirmed, provisional and cancelled documents
- Accumulated billing
- Sales ranking (by client and by product)
- Sales by vendor and country



Key information available for:

- CRM
- Sales
- Procurement
- Stocks
- Production
- Equipment Maintenance
- Quality Control
- Treasury
- Accounting
- Human Resources
- Fixed Assets

MIS|ERP Software for Offset Packaging

Business Intelligence

Sistrade® Business Intelligence is a tool that collects and compiles large amounts of data in order to generate relevant information regarding the companies' operations. Through this module, companies have a better understanding of the daily operations as well as their environment. Business Intelligence has a wide application when applied to an organization, as for example, Business, Finances, Sales, Purchases or Production.



Sistrade Solution

- Perform analysis, by crossing multiple dimensions and metrics
- Apply filters to any dimension of analysis
- Results displayed analytically and graphically using any device: PC, tablet, smartphone
- Information updated hourly, daily or on weekly basis
- Set latency in order to generate, correct and updated data results
- Export data results to PDF, Excel and Word files

Sales Dashboards

- Analyse sales by profit margin
- Article invoicing
- Payments to suppliers
- Receipts from customers

Purchases Dashboards

- Analyse the major suppliers
- Most purchased products
- Inventory
- View inventory turnover rate

Production Dashboards

- Deadline compliance rate
- Job order costs (actual cost vs estimated vs sales value)
- Setup time rate, percentage of setup time over the total production
- Availability ratio: time machine/section/plant should work vs time it is working



MIS|ERP Software for Offset Packaging

Solutions

Commercial Management & Estimating

Estimating
Customer order
Shipment
Invoicing
CRM

Stocks & Purchases Management

MRP
Purchases
Stocks Management
Suppliers Management

Production Management

Scheduling
Data collection
Industrial costing
Job order management

Administrative & Financial

Accounting
Treasury
Fixed assets
Human resources

Other features

Mobile Warehouse
Equipment Maintenance
Quality Control
Ecomanager
Energy Management
RDI Management
Business Intelligence
SmartStatistics
Report Generator
Web2Print
Balanced Scorecard

MIS|ERP Software for Offset Packaging

Sistrade Users Examples

Sistrade® MIS | ERP Software is being used by more than 3000 users, in more than 20 countries and spread around 4 continents.

Meet some of our clients from the Packaging Printing Industry:



Portugal

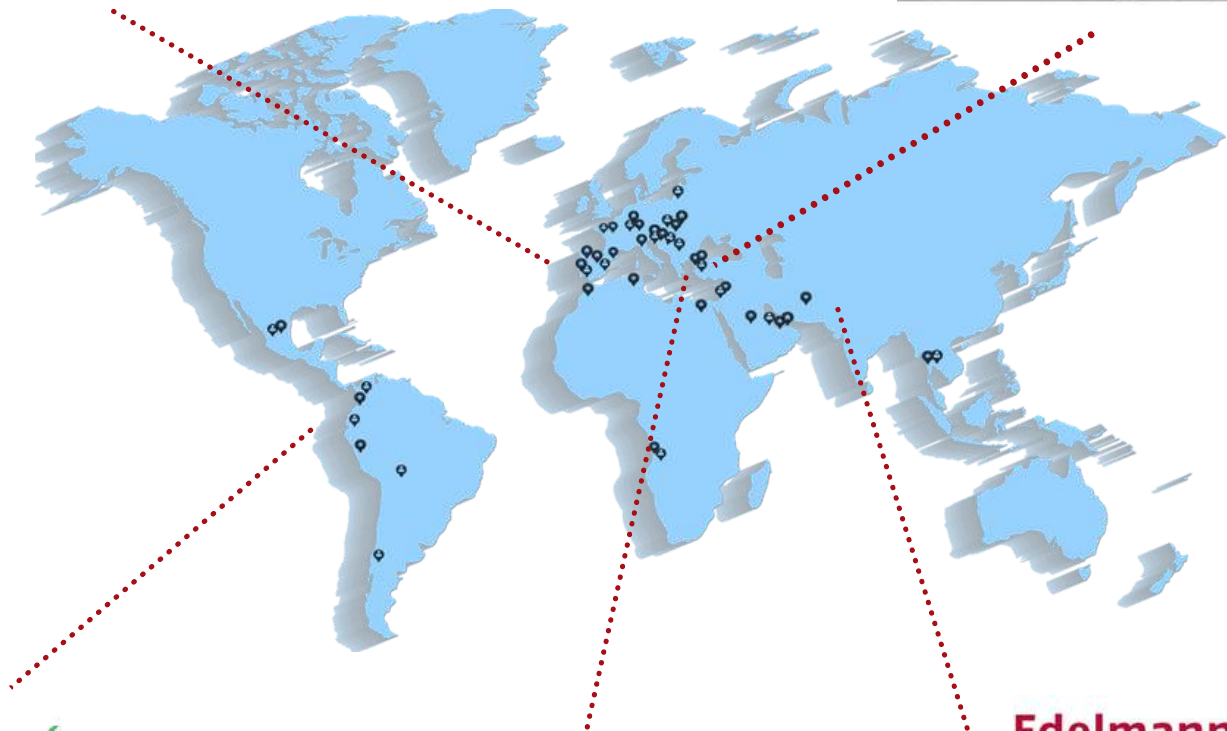
Olegário Fernandes is a producer of cardboard boxes, self-adhesive label and wet-glue and film labels. in Lisbon..



Sentez Ambalaj

Turkey

Sentez Ambalaj San Ve Tic A.Şm is one of the biggest packaging manufacturing companies in Turkey



Poligráfica, C.A.

Ecuador

POLIGRÁFICA C.A. is a printing and packaging company, based in Guayaquil, in Ecuador



EKOL OFSET

Turkey

EKOL OFSET is a printing and packaging manufacturing company in Turkey.



Edelmann

Edelmann Packaging

India

Edelmann is a german company with a production facility in India that uses Sistrade Software for packaging production.





powered by **Sistrade**

Porto - Headquarters

Travessa da Prelada, 511
4250-380 Porto - Portugal
inov@sistrade.com

Lisbon

Av António Augusto de Aguiar nº148 - 4ºC
1050-021 Lisbon - Portugal
lisboa@sistrade.com

Madrid

Ribera del Loira 46 - BL 2 PL 0
28042 Madrid - Spain
madrid@sistrade.com

Istanbul

Dikilitaş Hakkı Yeten Cad. Sel. Plaza, 10/C
Kat:6 Fulya 34349 Besiktas - Turkey
istanbul@sistrade.com

Frankfurt

Dornhofstr. 34
63263 Neu-Isenburg - Germany
frankfurt@sistrade.com

Ljubljana

Rozna dolina, Cesta II/29
1000 Ljubljana - Slovenia
ljubljana@sistrade.com

Abu Dhabi

Al Hilal Bank Building - Falah Street
PO Box 129 354 - UAE
abudhabi@sistrade.com

Milan

Viale Abruzzi 13/A
20131 Milan - Italy
milan@sistrade.com

Warsaw

Al. Niepodległości 69 - 7 °
02-626 Warsaw - Poland
warsaw@sistrade.com