



Security Printing

Management Information Systems for the Security Printing Industry

Sistrade® is an ERP | MIS system developed by SISTRADE, it is 100% web based and established on the most recent IT tools, allowing it to be used on all supports - PC/MAC, Windows/Linux/IOS/Android.

This secure sector of printing industry has established their individual production environment and dedicated workflow that differs from the rest of the industry, the constant development in innovative security design, discrete process functionalities and exceptional material technologies are driving forces for permanent differentiation from conventional techniques. Planning, manufacturing, controlling, and reporting of all production processes of such high complexity in accordance with all necessary security requirements is quite complicated with the unique support of standard software.

SISTRADE has developed a very flexible, secure and modular system architecture which ideally supports customized design and quick adaptation for any security requirement. Conceptual work and extensive development provided perfect answers and comprehensive functionality for the special demand in the Security Printing business processes.

MAIN FEATURES

- :: Estimating any type of Security Document
- :: Full compliance with Security protocols
- :: Secured trolley warehousing concept
- :: Management of plates, cylinders & clichés
- :: Full access to store from the initial steps of an estimate
- :: Multi measurements units and warehouses types
- :: Workflow for estimate approval
- :: Workflow for material auditing
- :: Simulation of amounts to more
- :: Application of financial margins and economic analysis of an estimate
- :: Electronic Submission of estimates
- :: Secure data exchange

SECURITY DOCUMENTS EXAMPLES

- :: EMV Bank Cards
- :: Certificates
- :: Bank Notes
- :: Cheques
- :: Passports
- :: Entry Visas
- :: ID Cards
- :: Stamps
- :: Tickets



SECURE MOBILE WAREHOUSING

- :: Receptions with supervision control
- :: Raw material outgoings for production
- :: Setup material outgoings for production
- :: Semi-Produced material reception
- :: Semi-Produced material auditing
- :: Return of blank material from Production
- :: Return of blank setup material
- :: Return of waste setup material
- :: Return of waste material
- :: Transfer between locations & auditing
- :: Real time localization system
- :: Picking & packing lists

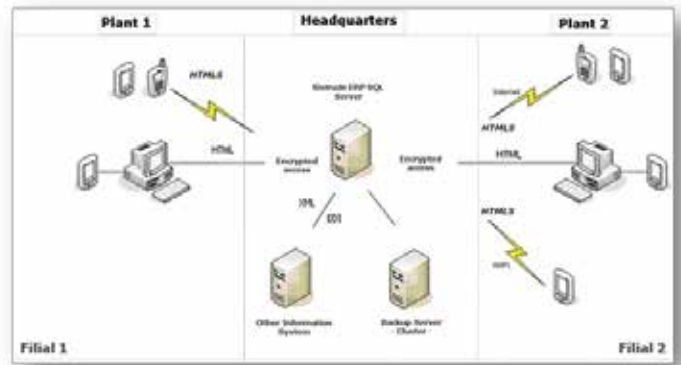
QUALITY CONTROL

- :: Security protocols forms
- :: Quality control tests
- :: Non-conformities
- :: Inspections
- :: Corrective order
- :: Preventive orders
- :: Immediate costs
- :: Corrective costs
- :: Nonconformities costs
- :: Material supervision



SYSTEM & SECURITY ARCHICECTURE

- :: Encrypted Users Passwords;
- :: Additional Security authentication per User/Device (Security tokens, Biometric, RFID, etc.);
- :: Encrypted data transmission through Wi-Fi connections (htmls protocol);
- :: Pre-assignment access rights per user, module and functionality;
- :: Historical logs per user, device and activity.

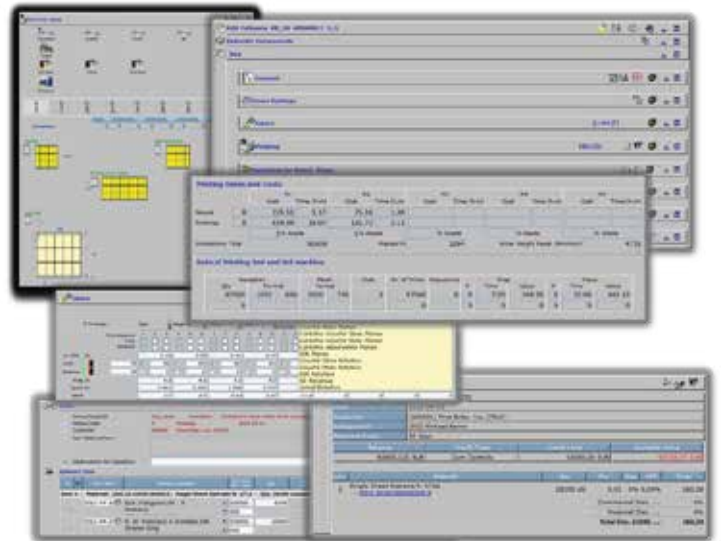


GENERAL ESTIMATE DATA

- :: A header that displays all customer's data, namely customer's name, address, salesman, payment conditions, expedition data, quantity, estimate description, currency, among other things;
- :: Technical data about the job to perform, e.g. format type, final format, information about whether the paper/plastic belongs to the customer or not, grammage(gr/m2), Microns, type of raw material, layers, printing forms, materials support, grammage level, work type, printing type, etc.;
- :: Multiple chapters with information about: Printing, Cutting, Collating, Lamination, Puncturing, hot stamping, Milling, Implanting, Testing, Personalizing, Quality Control, Packaging, etc.;
- :: Internal comments, from customers and from other specifications;
- :: Workflow, obeying a pre-defined approval sequence.

DEFINITION OF THE PRINTING FEATURES

- :: Definition of the printing machine with all its technical features;
- :: Change the features that the system suggests;
- :: Selection of colors which will be used;
- :: Selection of varnish type;
- :: Change of suggested paper by the system;
- :: Possibility of choosing a second printing machine;
- :: Definition of the paper fiber direction;
- :: Imposition calculation and full optimization of imposition plan.



MANUFACTURING EXECUTION SYSTEM

- :: Production data collection;
- :: Jobs assignments;
- :: Employees Logs & times;
- :: Machine Productions;
- :: Jobs in Progress, Performances;
- :: Live & online supervision;
- :: Industrial Costing;
- :: Management control & Overviews;
- :: Statistics & Reports.



SisTrade
Software Consulting, S.A.



SISTRATE - Software Consulting, S.A. | inov@sistrade.com | NIPC: 504785621 | www.sistrade.com
 PORTO: R. Manuel Pinto de Azevedo, 64B, 4100-320 Porto, Portugal | T. +351 226 153 600
 LISBON: Av. António Augusto de Aguiar nº 148, 4ºC, 1050-021 Lisbon, Portugal | T. +351 213 805 082
 MADRID: Ribera del Loira, 46 - Bloque 2, Planta 4, 28042 Madrid, Spain | T. +34 915 030 083
 WARSAW: Al. Niepodleglosci 69, 1st floor, 02-626, Warsaw, Poland | T. +48 606 744 996
 LJUBLJANA: Šmartinska 152, Hala 9, 1000 Ljubljana, Slovenia | T. +386 40 646 753
 ISTANBUL: Buyukdere Caddesi, Levent No 193 Binasi K.2, 34394, Istanbul, Turkey | T. +90 212 371 47 29
 FRANKFURT: Platz der Einheit 1, 60327 Frankfurt am Main, Germany | T. +49 (0)69 975 034 19
 ABU DHABI: Al Hilal Bank Building - Falah Street, PO Box 129 354, Abu Dhabi, UAE | T. +971 (0) 249 30297
 PARIS: 57, rue d' Amsterdam, Paris, 75008, France | T. +33 (0) 181 504 506
 MILAN: Viale Abruzzi, 13/A, 20131 Milan, Italy | T. +39 0 2954 205 376
 MEXICO CITY: Av. Insurgentes Sur #1898, piso 12 Colonia Florida | C.P.01020 | Distrito Federal, Mexico City
 T. +52 (55) 9171 1156